

Részletes radiológia - Ló

Dr. Tóth Péter
SZIE-ÁOTK Nagyállatklinika

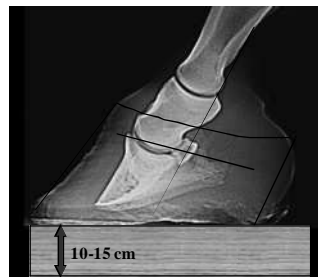


A patacsont radiológiai vizsgálata

- Lateromedialis felvétel
- Dorsopalmaris/plantarodorsalis felvétel
- Dorsoproximal-palmarodistal srég felvétel
- Palmaroproximalis - palmarodistalis srég felvétel

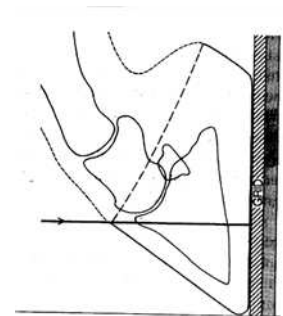
Patacsont: lateromedialis felvétel

- Pata fahasábra emelése
- Sugár centrálása

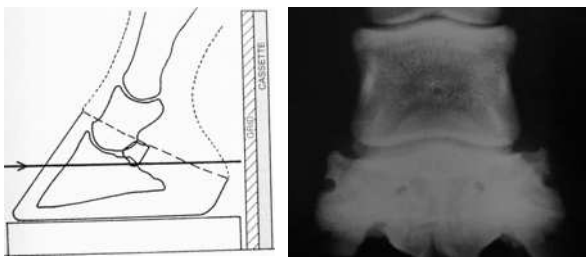


Patacsont: dorsoproximal-palmarodistalis felvétel

- Talpi felszín függőlegesen
- Sugár centrálás: a pártaszélre vízszintes rtg sugárirány

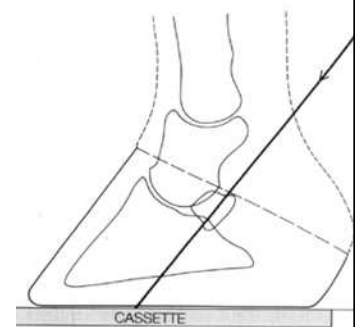


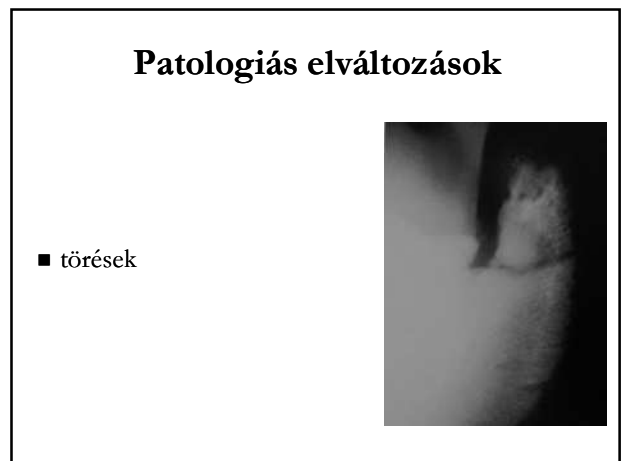
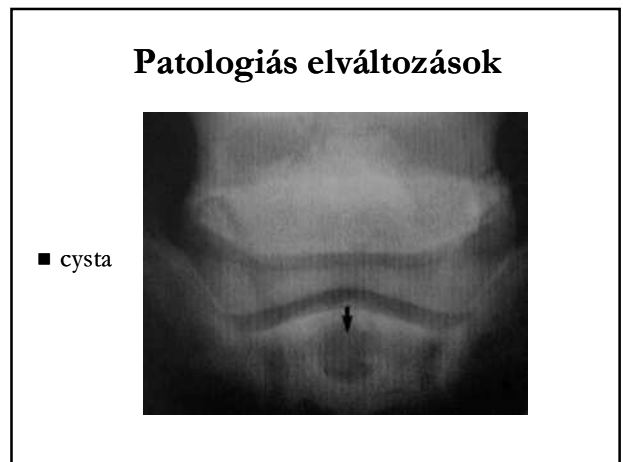
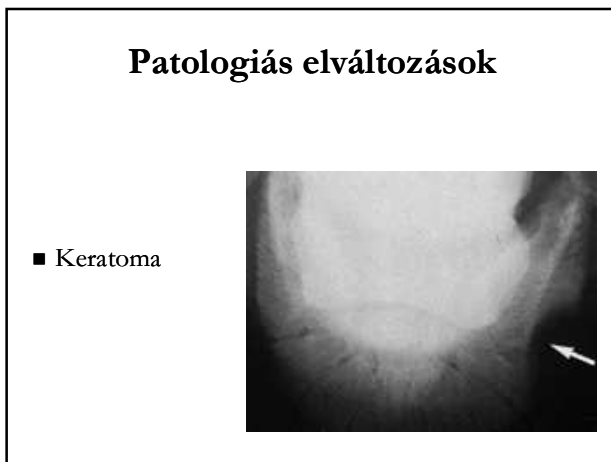
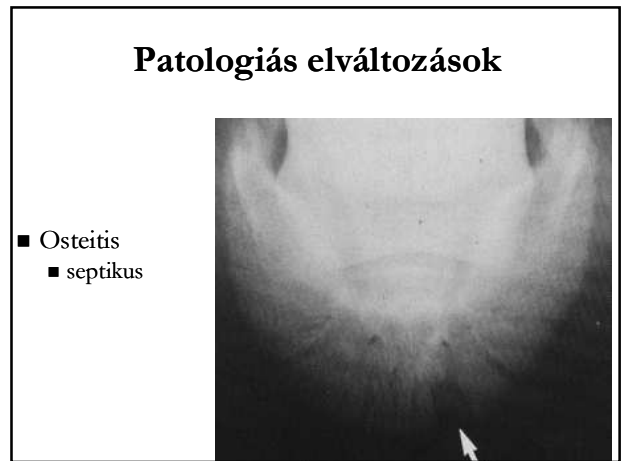
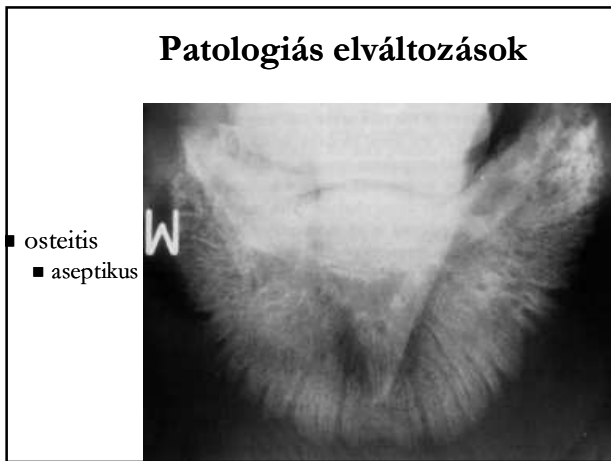
Patacsont: dorsopalmaris felvétel



Patacsont: palm.prox. – palm.dist. srég felvétel

- Rtg sugár szög: 45° -70°





Patológiás elváltozások

- Proc. extensorius törés



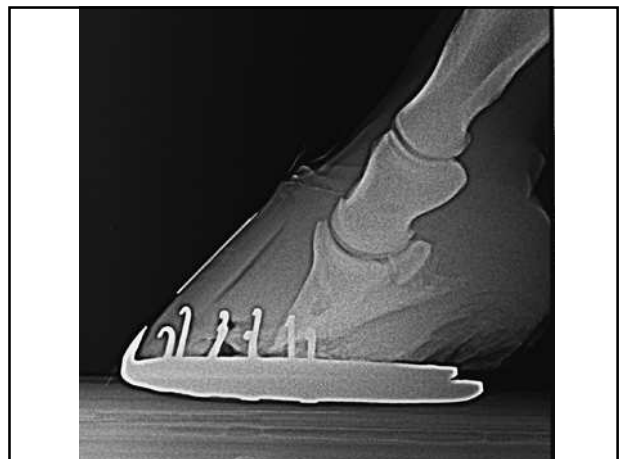
Patológiás elváltozások

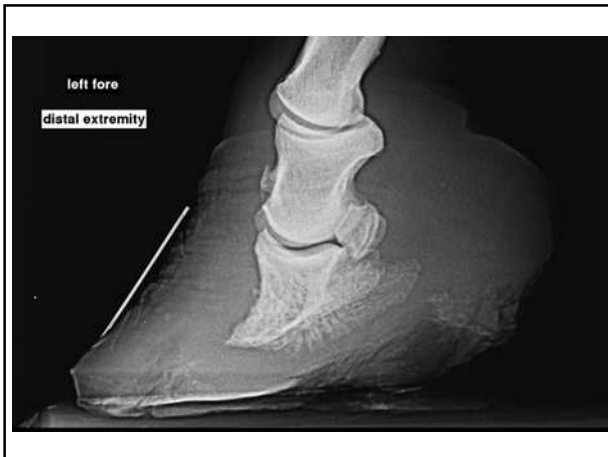
- Periarticularis osteophyta



Patológiás elváltozások

- Laminitis



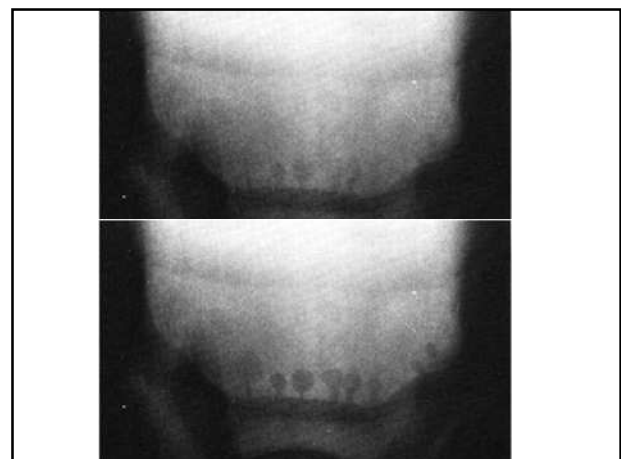
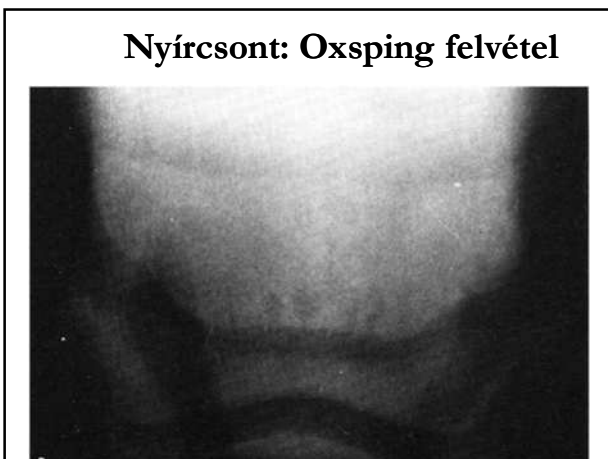


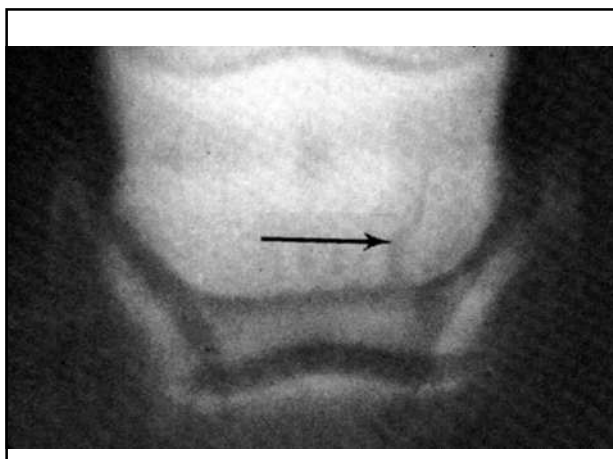
Os naviculare radiológiai vizsgálata

- Megfelelő előkészítés
- beállítás
 - Lateromedialis felvétel
 - Oxspring felvétel
 - Skyline (tangenciális) felvétel

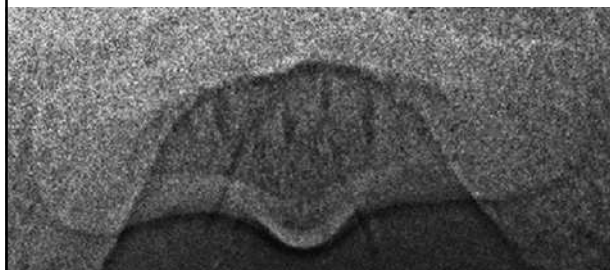
Nyírcsont: lateromedialis felvétel

- Sugár centálása

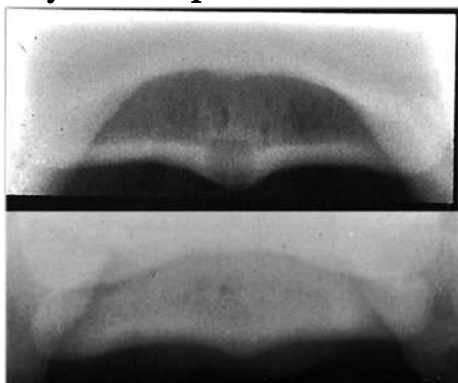




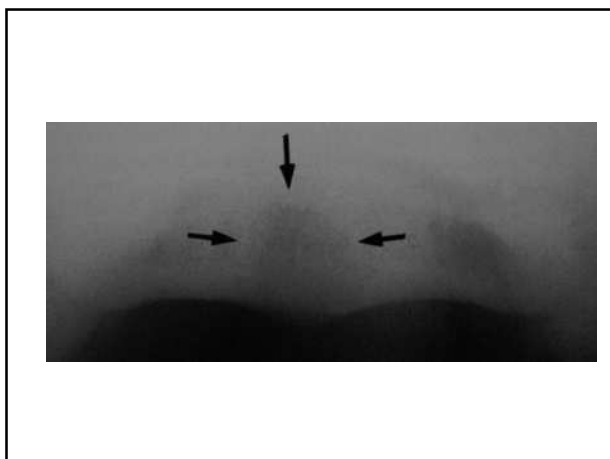
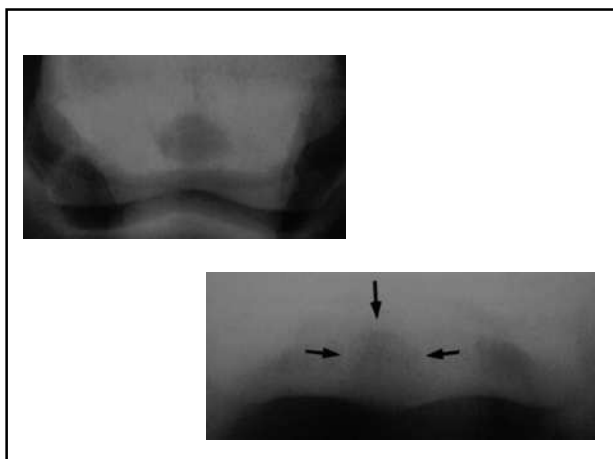
Nyírcsont: skyline felvétel
(palmarprox.-palmarodist. srég felvétel)



Nyírcsont: podotrochleosis



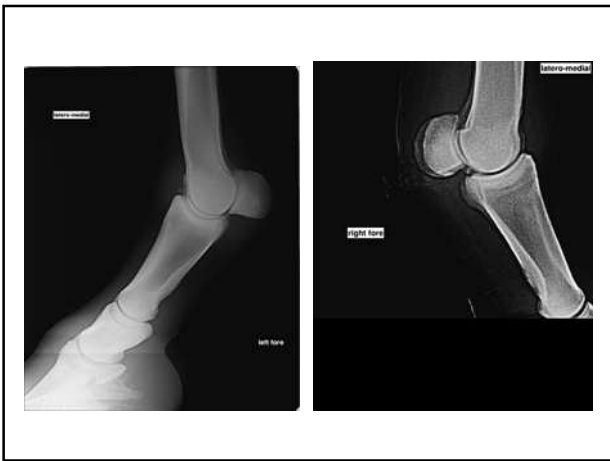
Nyírcsont: podotrochleosis



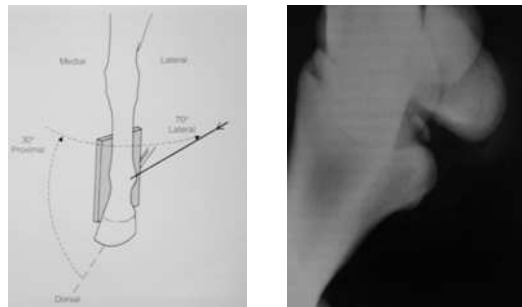
A csüdízület radiológiája



Csüdízület: kóros elváltozások I.



D30°Pr70°L-PaDiMO/D30°Pr70°M-PaDiLO



Csüdízület: kóros elváltozások II.

■ physitis



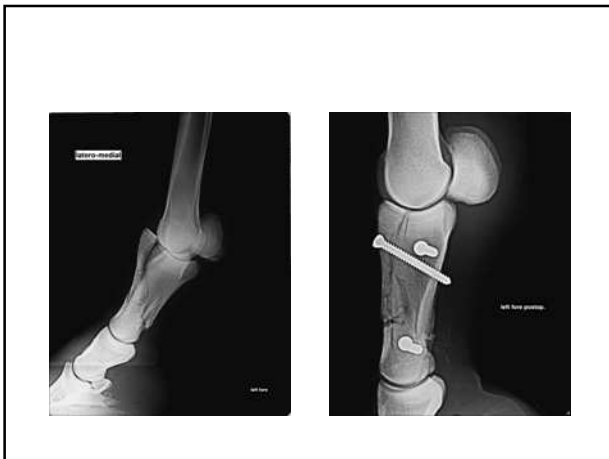
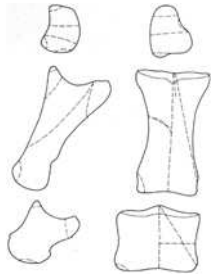
Csüdízület: kóros elváltozások III.

■ sesamoiditis



Csüdízület: kóros elváltozások IV.

■ törések



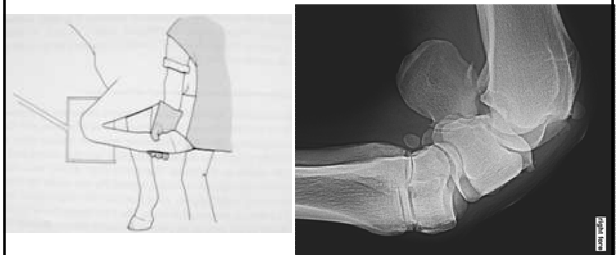
Arthrosis

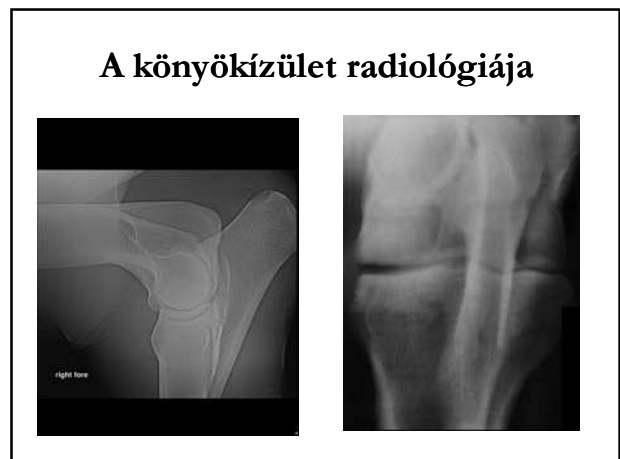
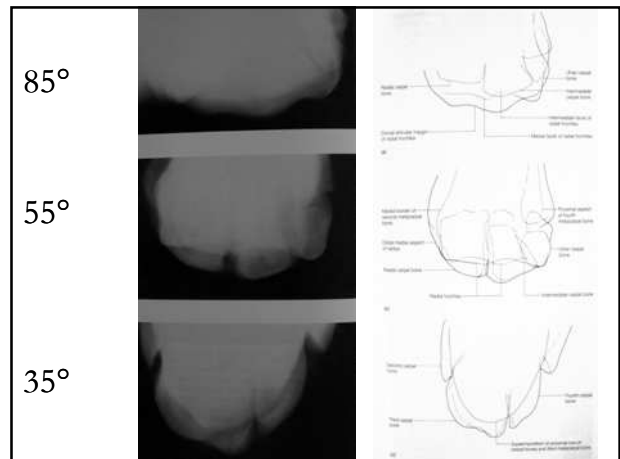
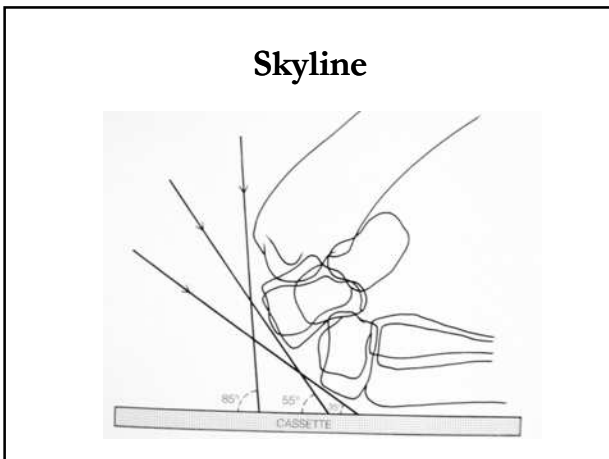


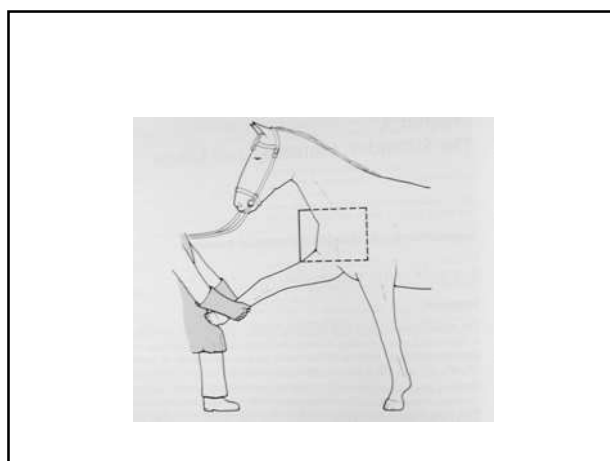
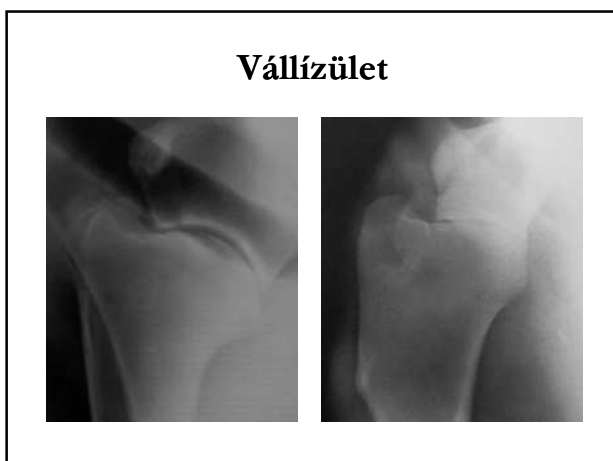
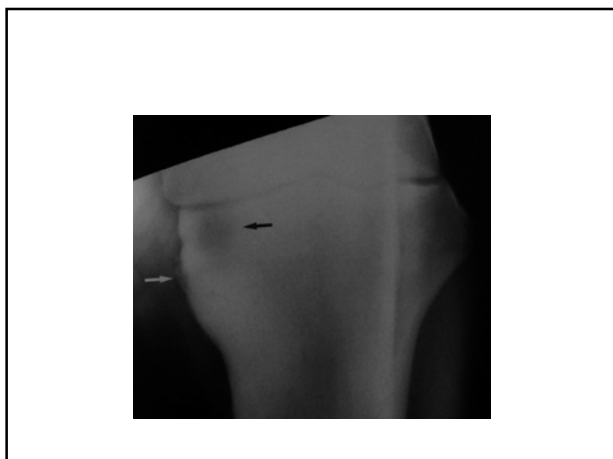
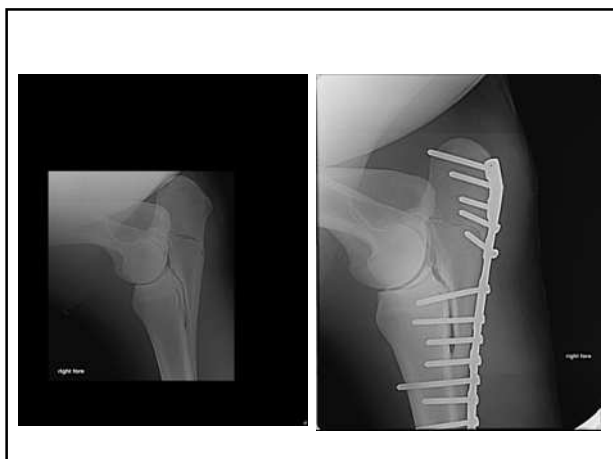
A carpus radiológiája

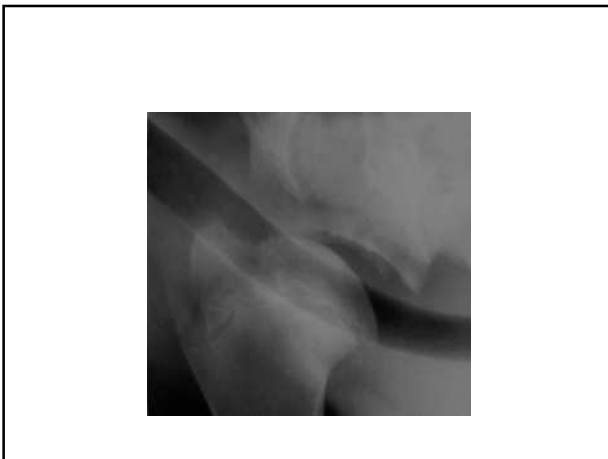


Hajlított LM





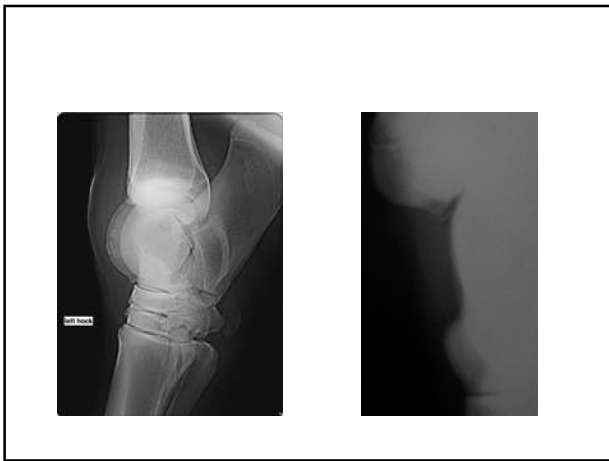




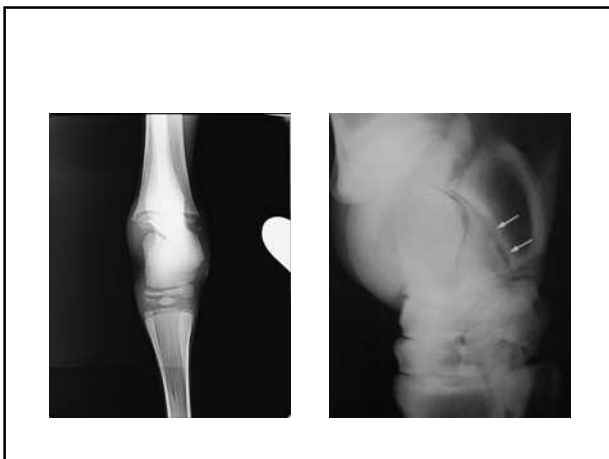
A csánk röntgenanatómiája III.



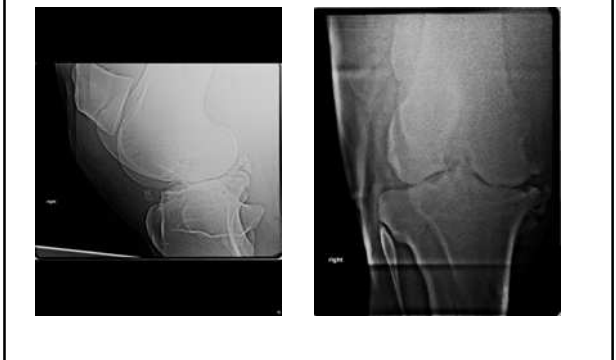
Osteochondrosis dissecans: csánk



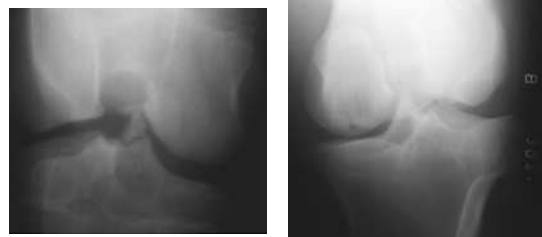
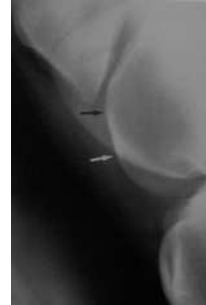
Csontos csánkpók



Térdízület

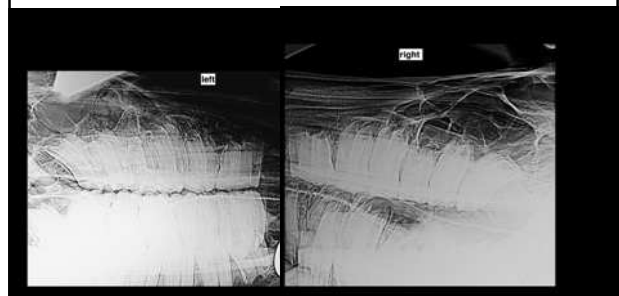
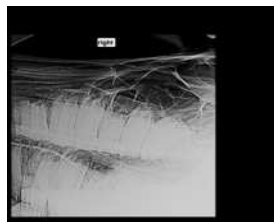
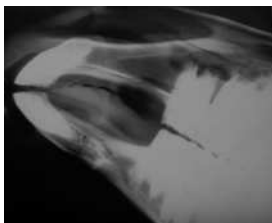


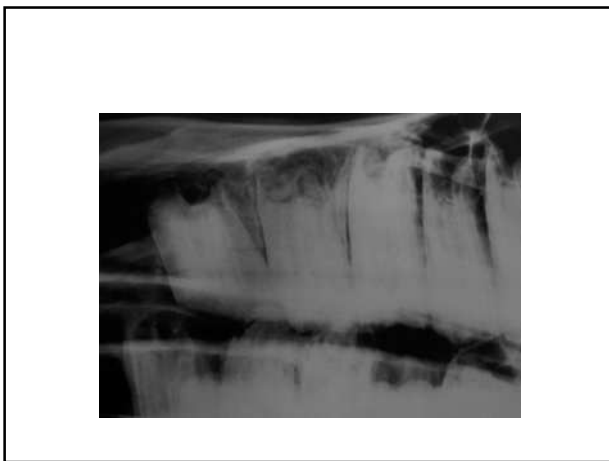
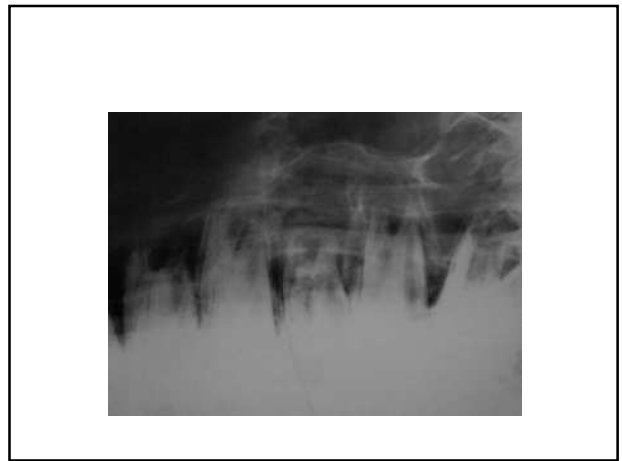
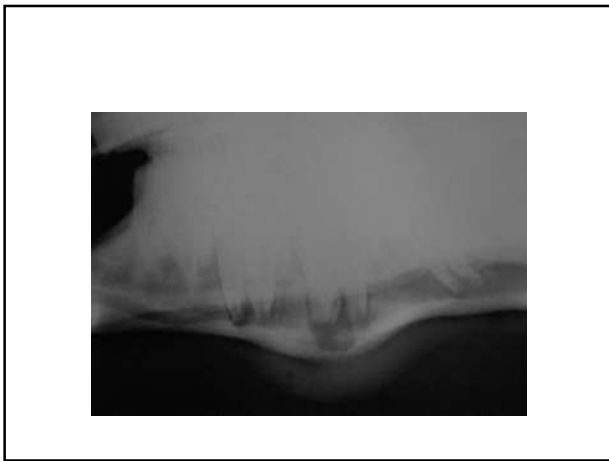
Skyline



Fej

- Beállítások: LL, VD/DV, srég felvételek
- Nagy kazetták
- Magas sugárértékek



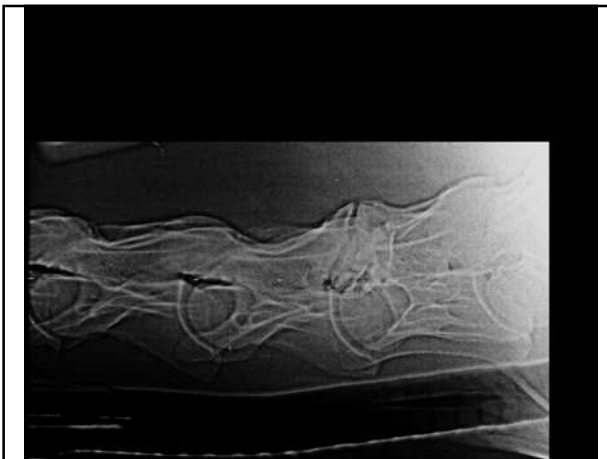
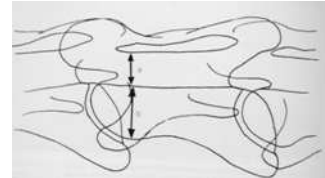


Nyak

- LL
- Nagy kazetták
- Pontos beállítás!

Wobbler-szindróma

- Pontos mérések
- MSD/ csigolyatest legszélesebb pontján mért távolság (C4-C6)
- <48%: +, myelographia a hely meghatározására
- 48%-56%: myelographia ajánlott
- >56%: -

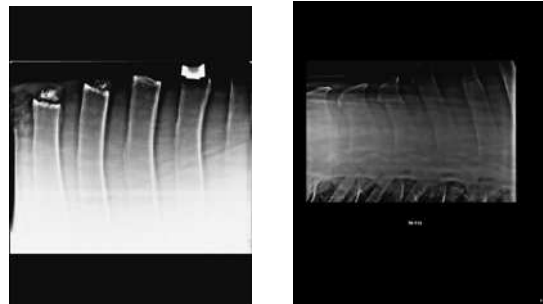
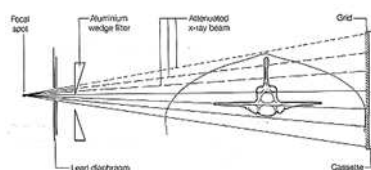


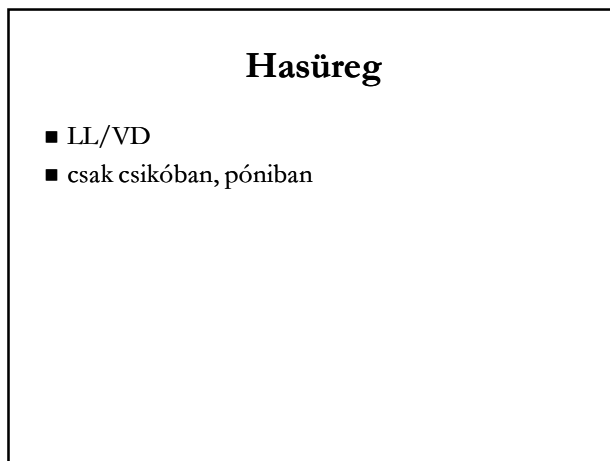
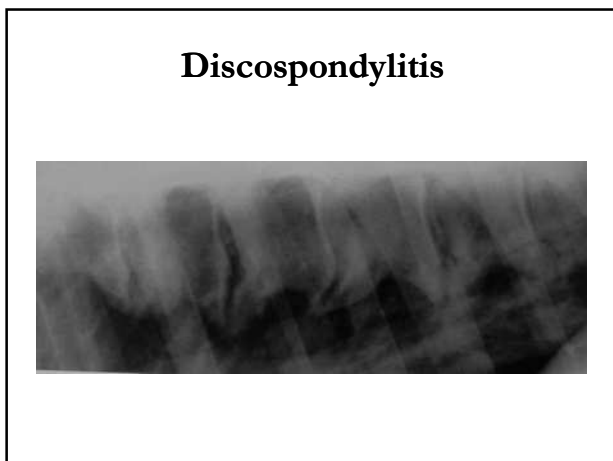
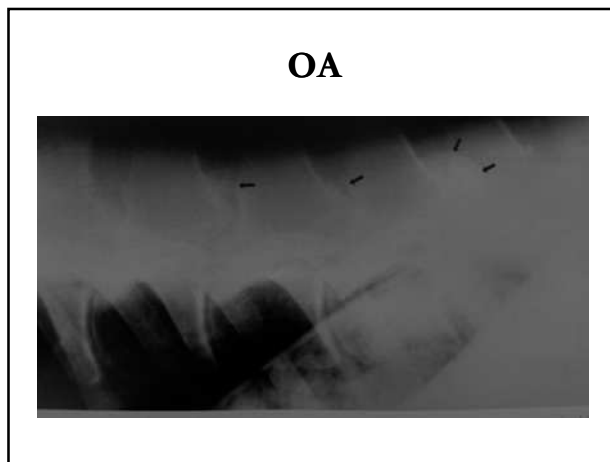
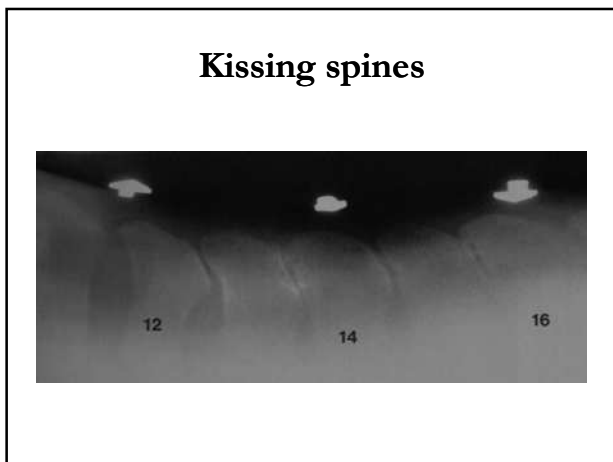
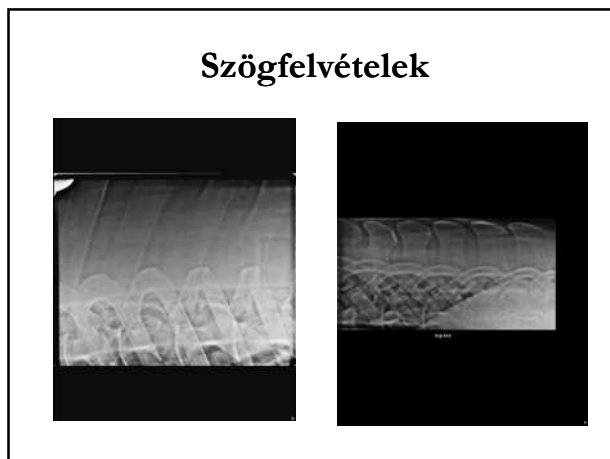
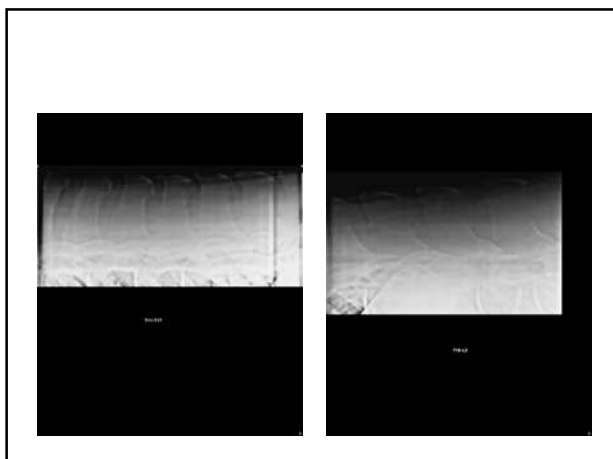
Egyéb elváltozások

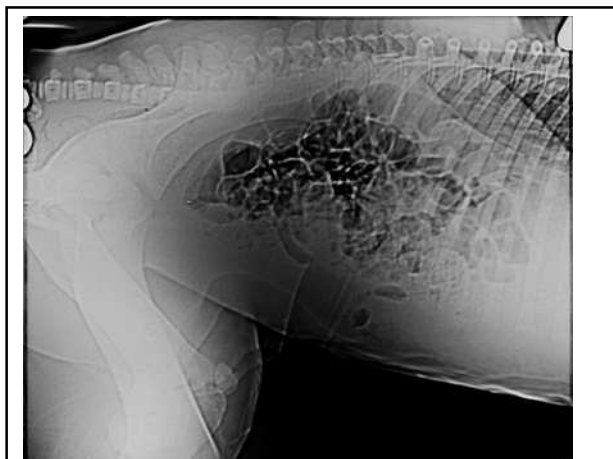
- OA
- Subluxatio
- Osteomyelitis
- Discospondylitis
- Daganat
- Tályog
- Törések

Hátgyéki tájék

- Th8-L3
- Laterolaterális szögfelvételek
- Nagy kazetták, magas értékek
- Alumínium ék filter







Mellüreg

- LL
- Nagy kazetták



Köszönöm a figyelmet!

